



MagCloud

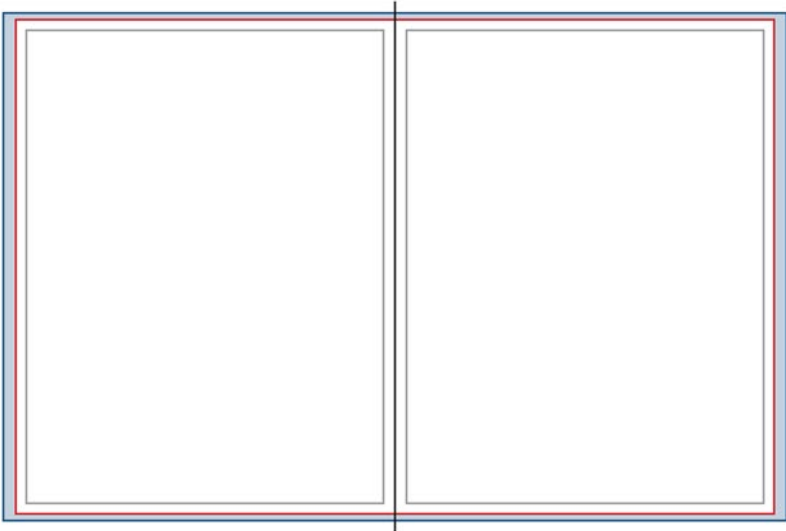
8.25" x 10.75" | Standard | Perfect Binding

Instructions for Adobe InDesign



Learn More:
www.adobe.com/indesign

8.25” x 10.75” | Standard | Perfect Binding



PDF Size: 8.5" x 11"

Trim Size: 8.25" x 10.75"

Safe Zone: 7.75" x 10.25"

Bleeds

Top: 0.125"

Inside: 0"

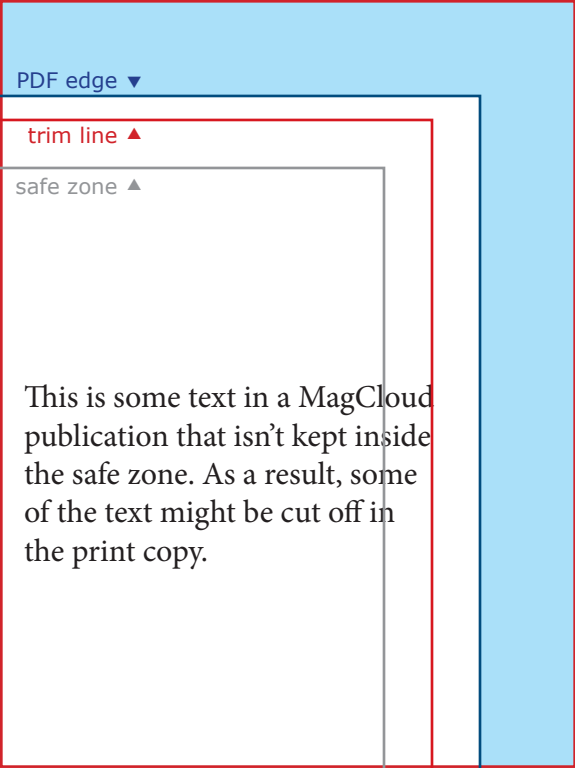
Bottom: 0.125"

Outside: 0.25"

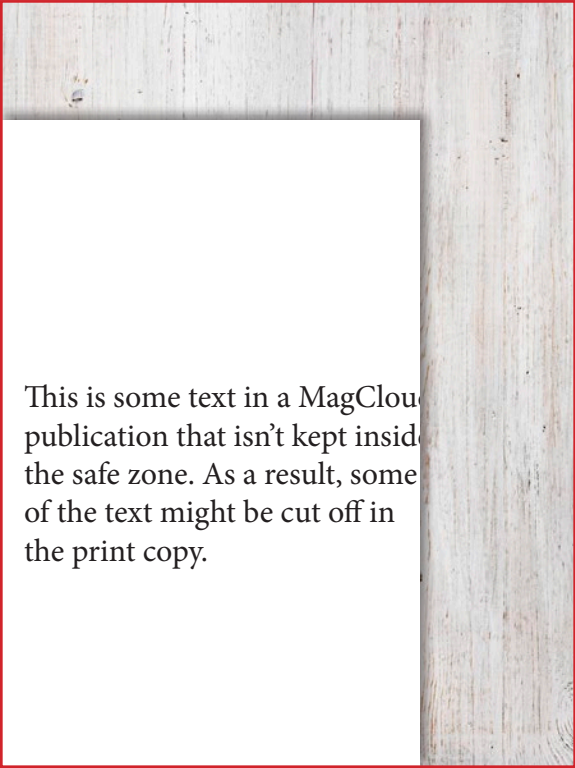
Page Count: 20 pages min, 384 pages max, multiple of 2 | PDF Size: 300MB max

- The trim can vary slightly in either direction, so full page images should fill the bleed area, while text should be kept in the safe zone (0.25” inside the trim line). See examples on the following pages for more information.
- For the best output, we recommend using images that are 300 dpi with the original color profiles embedded in the PDF. Text should be CMYK with the fonts embedded. There shouldn't be any spot colors used in the file.
- Don't include printer marks in your PDF, and don't lock it with a password.
- If the PDF you export from InDesign is larger than 300MB, first make sure that all of your PDF Export settings match those in this document, then try lowering the pixels per inch in the Compression tab from 300 down to as low as 200.
- The first page in your PDF will be your front cover and the last page will be the back cover. You will have the option to upload a spine file separately after your initial PDF upload.
- A 6mm 2D barcode will be added to the lower righthand corner of your back cover (the last page of the PDF). You can see a preview of this after you upload your PDF to the MagCloud site.
- Check out the "Designing for Perfect Binding" post on the MagCloud Blog for more design tips.

BAD: text placed outside the safe zone may be trimmed off

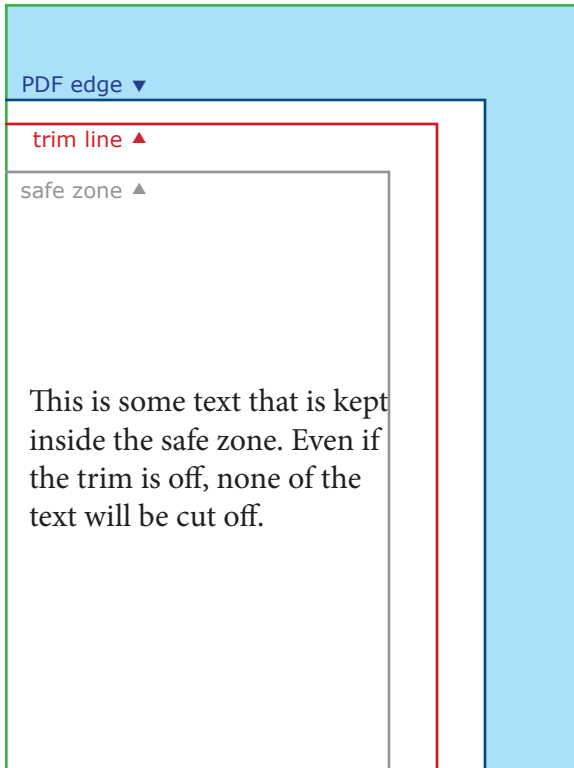


PDF file with text outside the safe zone



Trimmed print copy with text cut off

GOOD: text kept inside the safe zone will never get trimmed off

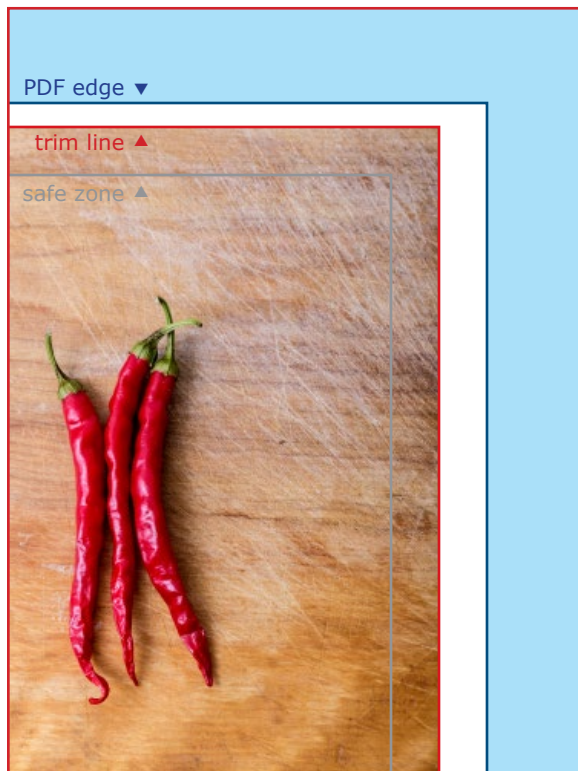


PDF file with text
inside the safe zone

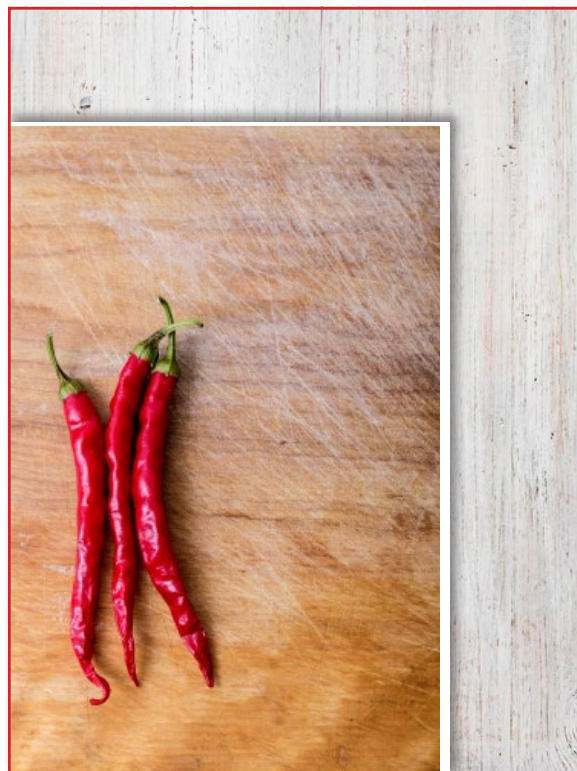


Trimmed print copy
with no text cut off

BAD: images that don't fill the bleed might have a white edge

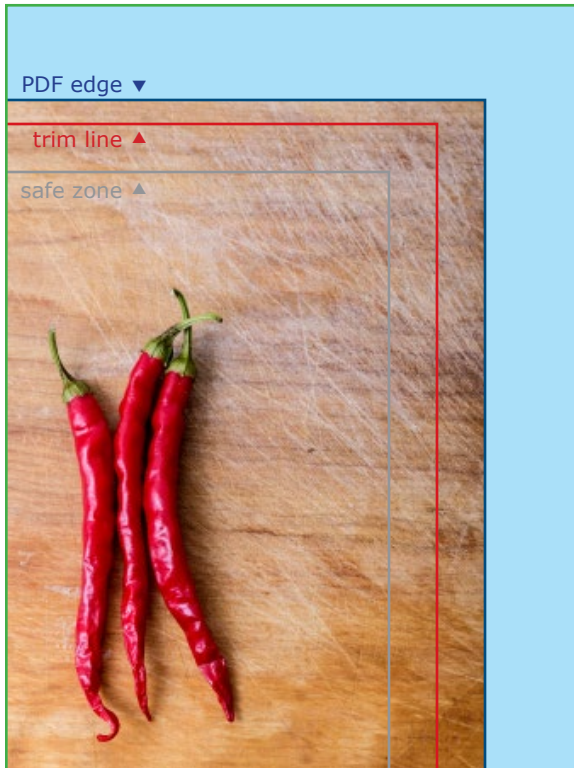


PDF file with an image
that stops at the trim line

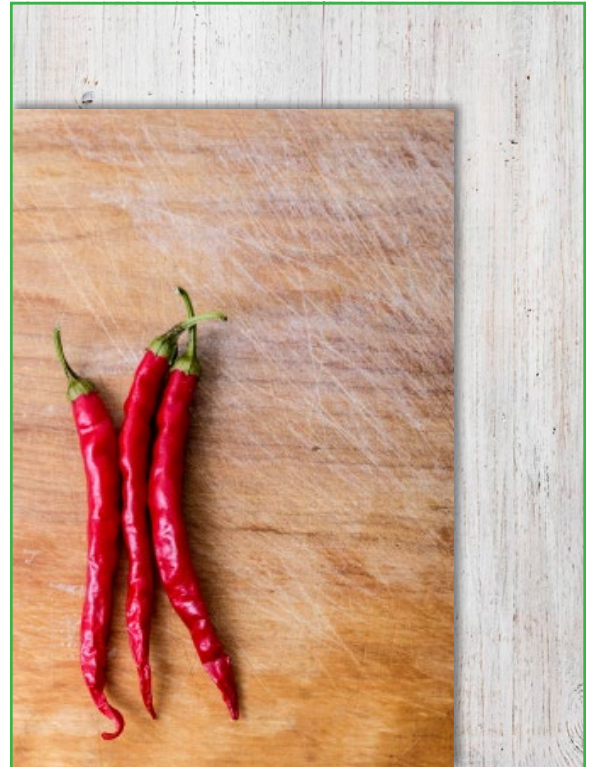


Trimmed print copy with a
white edge around the image

GOOD: images that fill the bleed will go to the edge of the page

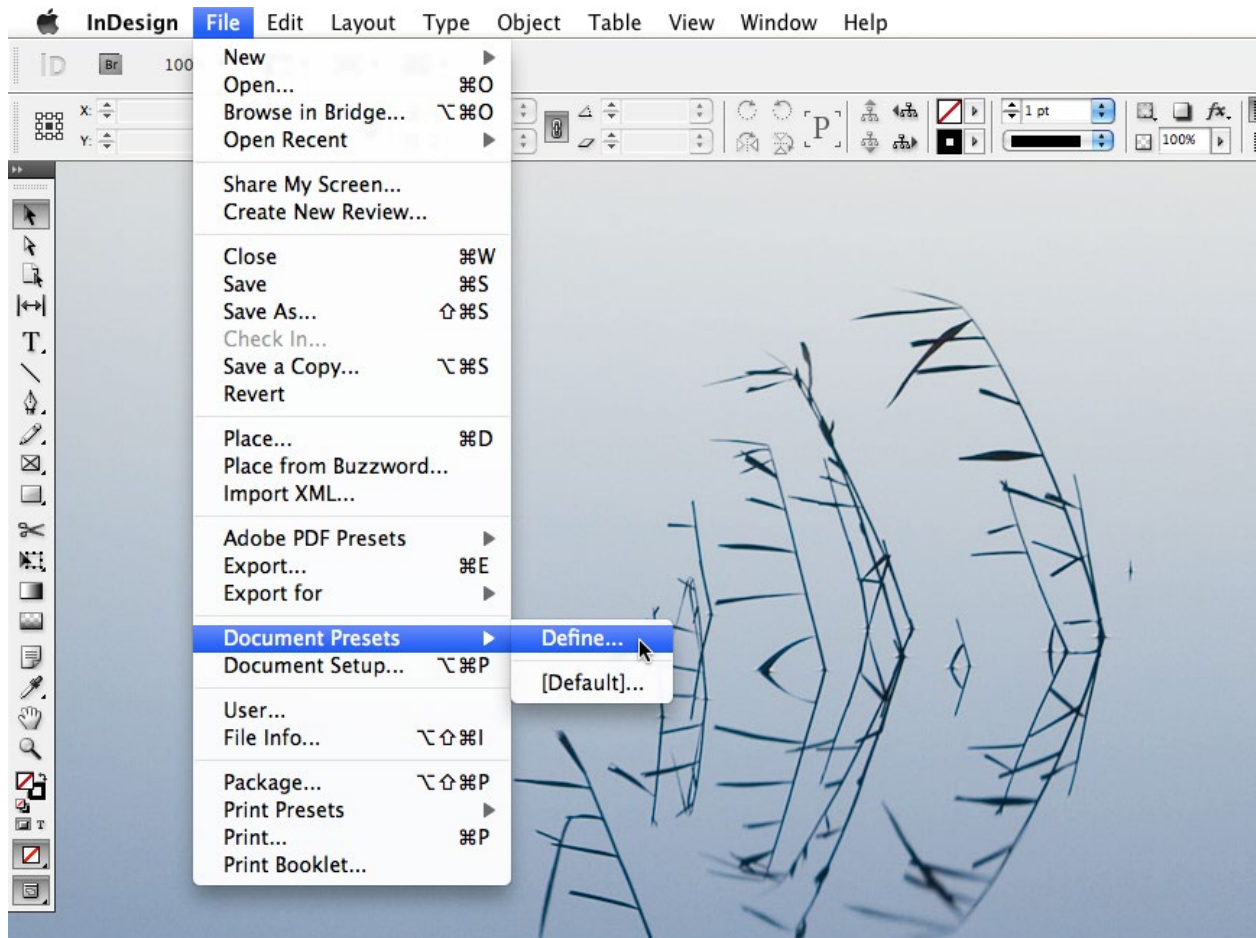


PDF file with an image that goes to the edge of the PDF



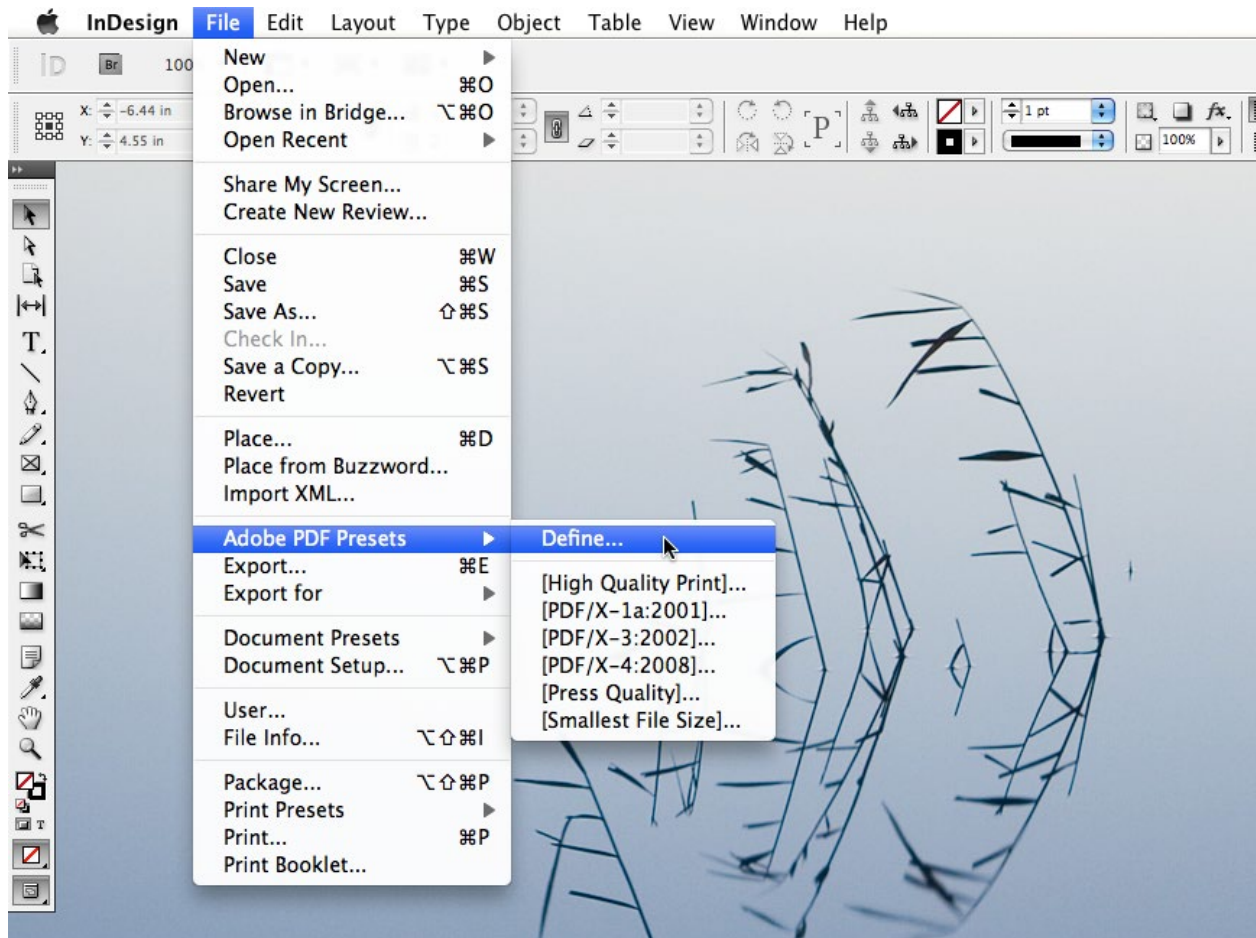
Trimmed print copy with the image to the edge of the page

Install the MagCloud Document Preset in InDesign:



1. If you haven't already, go to the Create tab on the MagCloud website, download the PDF instruction packet for Adobe InDesign from the Getting Started page, and unzip the folder
2. Open Adobe InDesign CS4 or newer, and go to File > Document Presets > Define...
3. In the window that appears, click Load
4. Navigate to the "MagCloudPreset_8.25x10.75Standard.dcs" file inside the unzipped folder
5. Click Open, then OK

Install the MagCloud PDF Export Preset in InDesign:



1. Go to File > Adobe PDF Presets > Define
2. In the window that appears, click Load
3. Navigate to the "MagCloud PDF Export Preset.joboptions" file inside the unzipped folder you downloaded from the MagCloud site
4. Click Open, then Done

Create a New Document:

The 'New Document' dialog box is shown with the following settings:

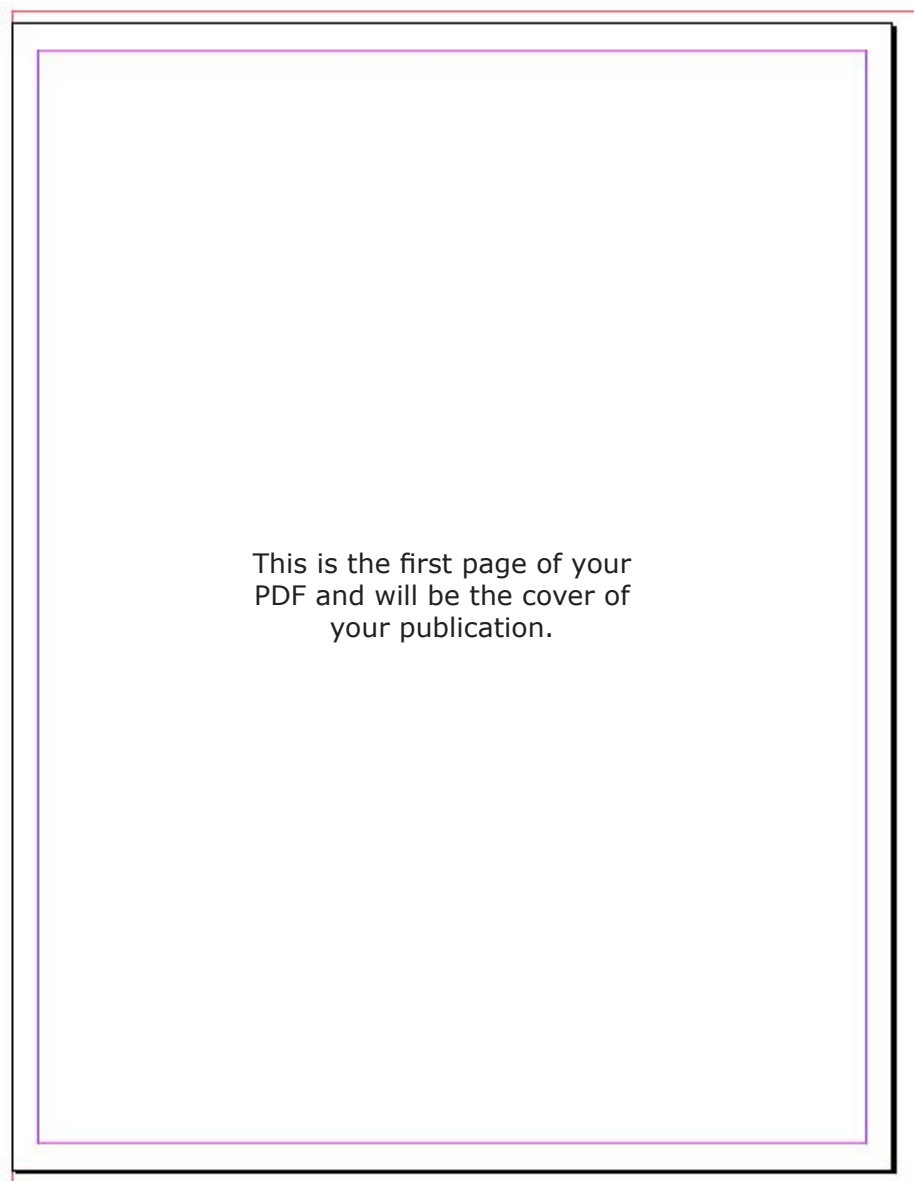
- Document Preset:** MagCloud 8.25" x 10....
- Number of Pages:** 20
- Facing Pages:** ☒
- Master Text Frame:** ☐
- Page Size:** Custom
- Width:** 8.25 in
- Height:** 10.75 in
- Orientation:** Portrait
- Columns:** Number: 1, Gutter: 0.1667 in
- Margins:** Top: 0.25 in, Bottom: 0.25 in, Inside: 0.25 in, Outside: 0.25 in
- Bleed and Slug:**

	Top	Bottom	Inside	Outside
Bleed:	0.125 in	0.125 in	0 in	0.25 in
Slug:	0 in	0 in	0 in	0 in

Buttons on the right: OK, Cancel, Save Preset..., Fewer Options.

1. Go to File > Document Presets > MagCloud 8.25" x 10.75" Standard to open the window shown above. You can also open this window by going to File > Document Setup if you want to adjust a previously created document to match the MagCloud settings shown above.
2. Insert the number of pages you want your document to be. For a perfect bound publication, your page count can be anywhere from 20 to 384 pages, but must be a multiple of 2.
3. Click OK

Get to Know the Layout of Your Document*:



The red line is the edge of the 8.5" x 11" PDF you will upload to MagCloud.

The black line is the 8.25" x 10.75" trim line that will be the edge of your print and digital versions.

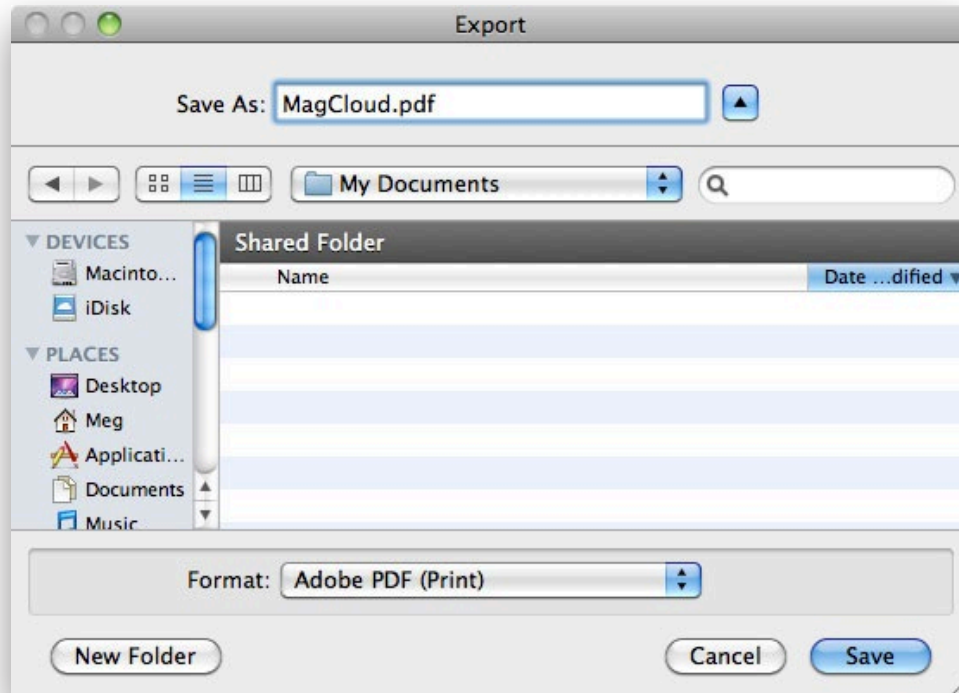
The purple line is the safe zone, 0.25" inside the trim line.

The area between the black and red lines is called the bleed.

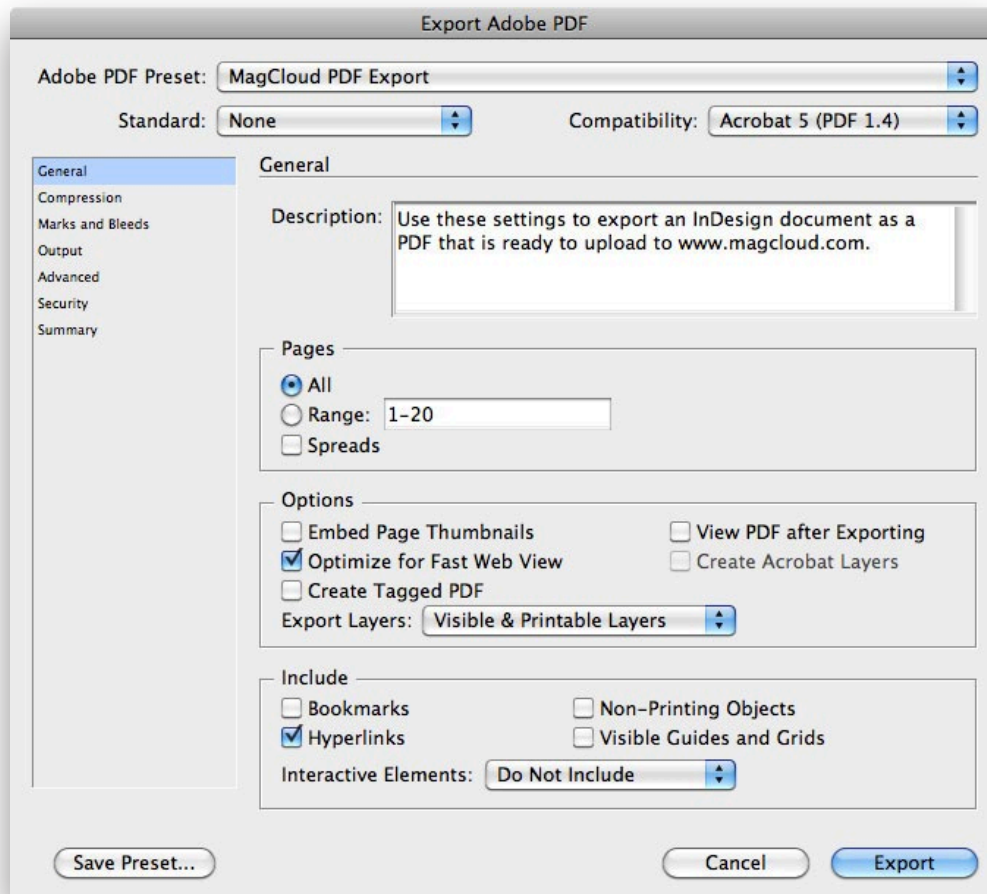
IMPORTANT: The trim line can vary slightly in either direction, so all text content should be kept within the safe zone to avoid getting trimmed off, while all images you want to extend to the edge of the page should fill the bleed.

*If your screen doesn't look like this, go to View > Screen Mode > Normal and View > Grids & Guides > Show Guides

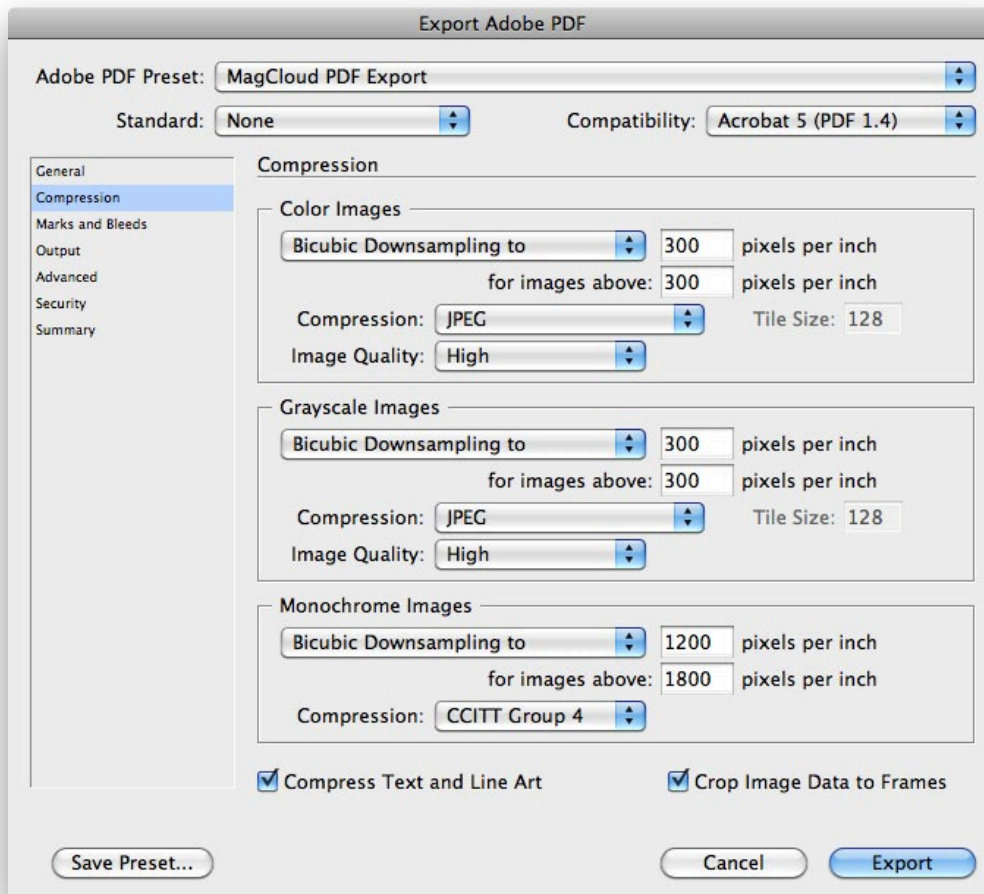
Export Your File as a PDF:



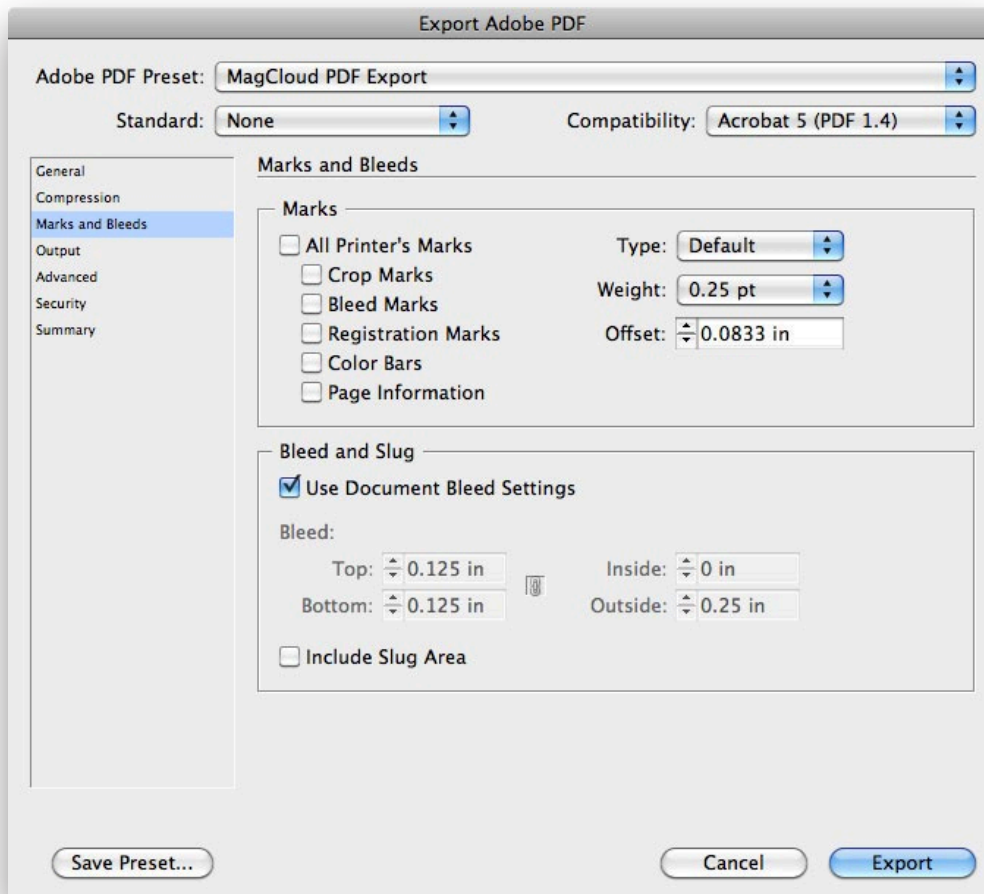
1. Once you've finished designing your publication, make sure you save your InDesign document
2. Go to File > Adobe PDF Presets > MagCloud PDF Export Preset to open the window shown above
3. Select a name for your publication and select where you want to save it on your computer
4. Click Save



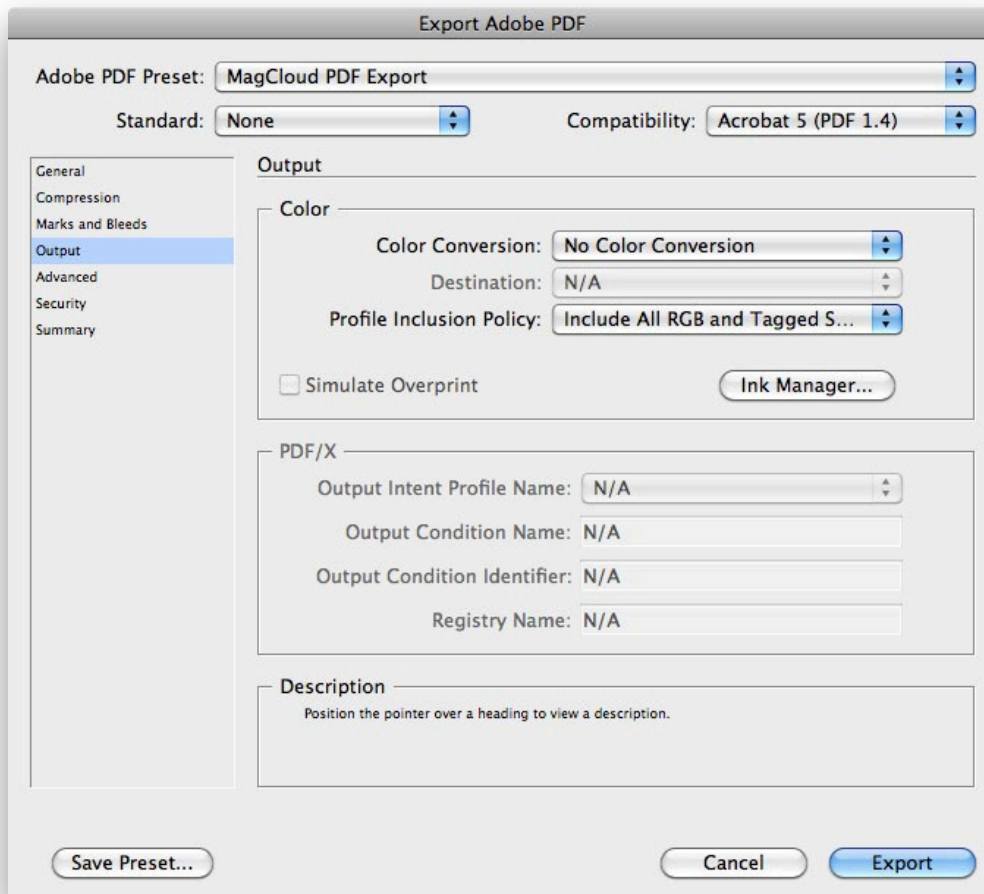
5. In the general window, make sure the box next to "Spreads" is NOT checked under the Pages section. If you want to include hyperlinks in your publication, make sure the box next to "Hyperlinks" is checked under the Include section.



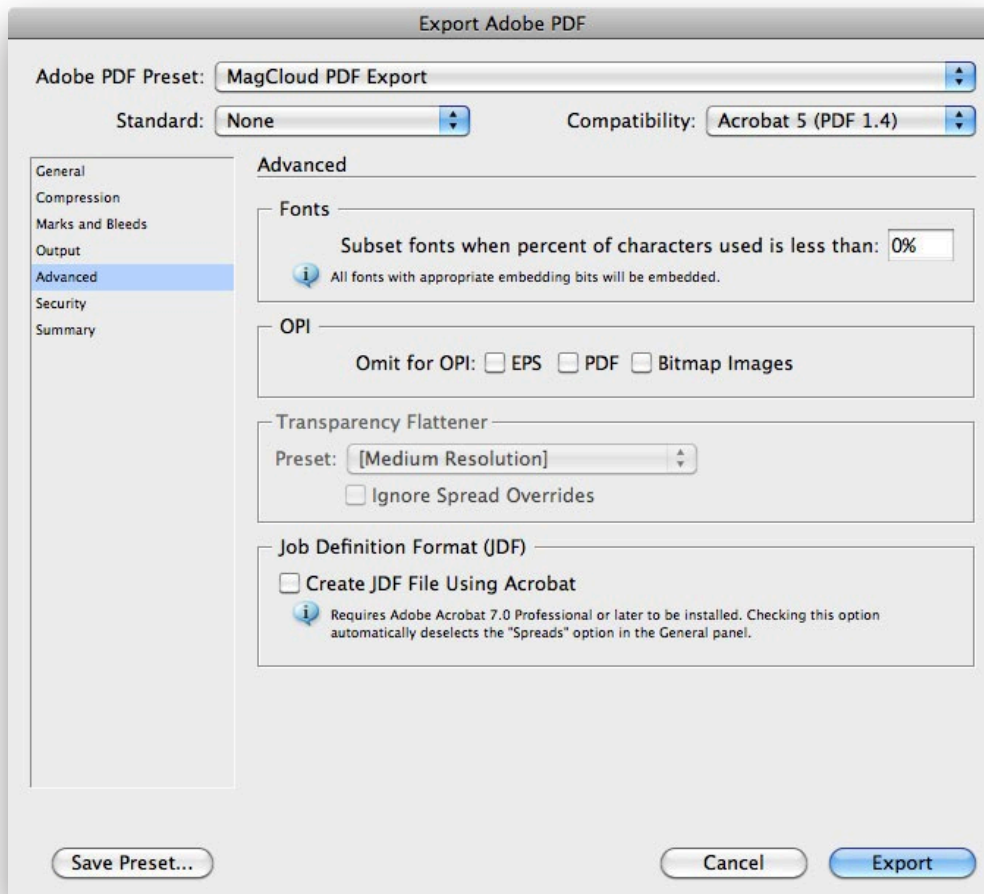
6. In the Compression tab, check that for both Color and Grayscale Images, "Bicubic Downsampling to" is selected and set to 300 pixels per inch, with "JPEG" selected from the Compression dropdown menu and "High" selected from the Image Quality dropdown menu. Also, make sure both boxes at the bottom of the window are checked.



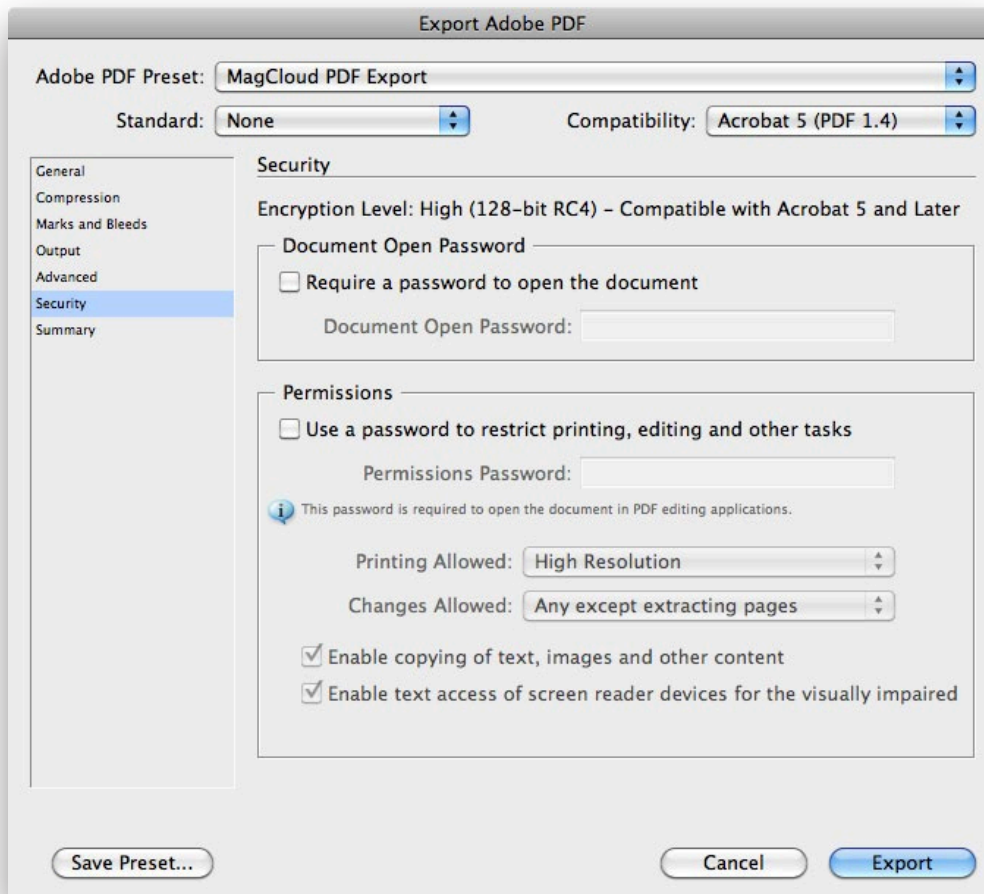
7. In the Marks and Bleeds tab, make sure none of the checkboxes under Marks are checked. The box next to "Use Document Bleed Settings" should be checked, and the bleed settings for your document should automatically be filled in.



8. In the Output tab, make sure "No Color Conversion" is selected from the Color Conversion dropdown menu and that "Include All RGB and Tagged Source CMYK Profiles" is selected from the Profile Inclusion Policy dropdown menu.



9. In the Advanced tab, make sure 0% is entered in the field next to "Subset fonts when percent of characters used is less than:"



10. In the Security tab, make sure none of the boxes are checked

11. Click Export

Your PDF is now ready
to upload to MagCloud!

MagCloud

www.magcloud.com